

## Location

Dewa Phuket is located a few steps from the stunning arc of Nai Yang Beach, and next to the Sirinath National Park, on the northwest coast of Phuket island. Just minutes from Phuket International Airport, Dewa Phuket allows guests the convenience of a quick ride upon arrival and departure. Dewa Phuket is centrally located, providing easy access to Phuket City (30 minutes away) and the west coast road that weaves its way past the island's beautiful beaches and down to the south of this tropical Eden.

## Concept

Integrating both resort and residential living, Dewa Phuket has 34 resort pool villas and 62 one- and two-bedroom residences, making it the ideal holiday resort for everyone, from honeymooners to families. With its genuinely friendly boutique-style hospitality and design, Dewa Phuket ensures all guests have a wonderful holiday experience.

## Accommodation

- Pool Villas – a minimum of 130 square meters of indoor and outdoor living space, with a private plunge pool. Each Villa accommodating two adults and two children, or a maximum of three adults. Pool villas, with their shady modern Sino-Portuguese interior and complementary furnishings are the ultimate in comfort and privacy.

- One Bedroom Apartment – With 67 square meters of living space including a balcony, all apartments are fully furnished with the comforts of home, including a kitchenette. Accommodating two adults with the option of an extra bed for a third person.

- Two Bedroom Apartment – Between 110 to 145 square meters of living space including balcony. Fully furnished with the comforts of home including a fully-equipped kitchen and dining area, these apartments are ideal for families with children.

In Room Complimentary Amenities include plasma TV with DVD, safe deposit box, fridge, coffee maker, hair dryer, rainshower in the villas, bathroom amenities and wi-fi access.

## Dining

- The Dining Room

The Dining Room offers guests a view of the beach in air-conditioned comfort as they enjoy the modern blend of flavours and styles from different culinary traditions, using the freshest ingredients available, prepared in simple and healthy ways.

To accompany your meal we have a range of imported high class wines, available for your selection from the wine rack and built-in chiller in the Dining Room.

- The Lounge

An alfresco dining venue open for breakfast from 6.30am, followed by a healthy all-day dining menu featuring tropical Asian and Western delights. This is the place to enjoy a sundowner and share a platter of Eurasian-style Tapas.

- The Deli

Located in the lobby area of the Residence, serving Continental-style breakfast, antipasto-style platters and take-away party and picnic packs as well as a range of freshly baked breads.

- In-Villa Dining and In-Residence Dining

For Breakfast, Lunch or Dinner with the option of a private barbeque (villas only) the choice is endless. Guest may choose from the in-room menu or request a favorite from the menu of any of the dining outlets (during the hours of operation of the outlets).

- Pre-arrival grocery shopping

Guests staying at the residences may pre-order basic groceries, which will be waiting for you in your kitchen when you arrive.

## Spa

Indulge in the tranquility of our spacious double private spa treatment rooms with outdoor bath. Pamper yourself with an array of treatments including traditional Thai massage. Hair treatment, pedicure and manicure, steam bath and Jacuzzi are also available in the Spa.

## Library

Relax and unwind with our collection of books and magazines, surf the Web or challenge each other with a selection of board games. Sign out DVDs or music CDs for your viewing or listening leisure in the comfort of your villa or residences.

## Resort Swimming Pools

A large free-form pool meandering round lush greenery which is located next to the main lobby area of the Resort, while the Residential residences have a 25-meter lap pool for the serious swimmers, as well as a kids' pool.

## Fitness Rooms

Both our Fitness Rooms (one in the main Resort building and the other in the Residence) are fully fitted with the latest equipment to ensure you get a thorough and safe workout.

## Kids' Corner

The Kids' Corner, between the Residences and the Resort, is staffed by trained personnel with the experience to keep your young ones safe and entertained while you are in the Spa, on the golf course, on a boat or simply getting some quality time on the beach.

## Luxuries & Essentials

In the lobby of the Residence we offer a convenience store stocked with all the basic essentials. In the Resort Gallery, you will find tropical beachwear and accessories, sportswear and special souvenirs for your loved ones at home.

## Guest Services

Our guest services desk is manned 24 hours a day, with our Resort Hosts on call to assist you with anything you may require, from consultations and reservations for excursions, to dining, baby-sitting, car rental or any other services you may need.

In addition, we have complimentary high-speed Wi-Fi internet access throughout the resort.

DEWA Phuket

## Resort Address

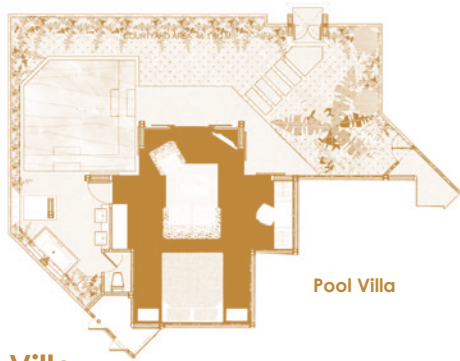
65 Moo 1, Tambol Sakoo, Amphur Thalung, Phuket  
83110, Thailand

T: +66 76 372 300 F: +66 76 372 399

[reservations@dewaphuket.com](mailto:reservations@dewaphuket.com)

[www.dewaphuket.com](http://www.dewaphuket.com)

The logo for Dewa Phuket features the word "DEWA" in a large, stylized, hand-drawn font. Below it, a horizontal line separates "DEWA" from the word "PHUKET", which is written in a smaller, clean, sans-serif font. The entire logo is set against a light, textured background.



Pool Villa

### Pool Villa

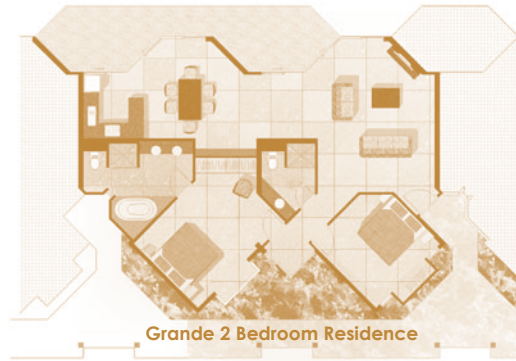
- Total area from 130 sq. meters to 200 sq. meters indoor and outdoor.
- Pool size 16 sq. meters.
- Outdoor bathtub, separate shower and double wash basin.
- Grass courtyard area with sun-lounger and dining area.
- King size bed with pull-out queen size extra bed option.
- Full amenities, coffee and tea making facilities, mini bar, room fridge, personal safe and hair dryer.
- Lcd 32" television with dvd player.



One Bedroom Residence

### One Bedroom Residence

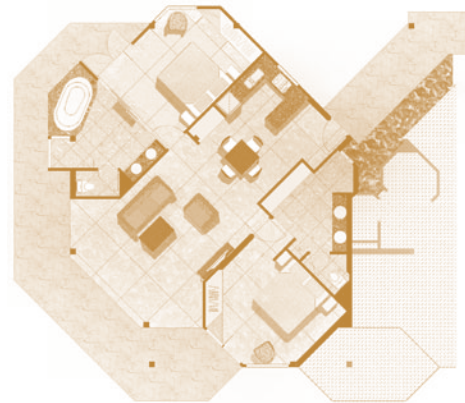
- Total area of 67 sq. meters, indoor space of 57 sq. meters and balcony space of 10 sq. meters.
- Balcony area with outdoor furniture.
- Pool facing with some units sea facing.
- Master bedroom king size bedding, build-in wardrobe and 22" wall mounted lcd television.
- Separate bathroom with shower and single basin, complete with amenities and hair dryer.
- Living area with lcd 32" television.
- Fully equipped open kitchen with dining counter.



Grande 2 Bedroom Residence

### Grande 2 Bedroom Residence

- Total area of 143 sq. meters, indoor space of 120 sq. meters and balcony space of 23 sq. meters
- Balcony area with outdoor furniture.
- Pool and sea facing.
- Master bedroom king size bedding, build-in wardrobe and 22" wall mounted lcd television. En-suite bathroom with bathtub, separate shower and double basin, complete with amenities and hair dryer.
- Second bedroom offers king-size bed with build in wardrobe and separate shower room.
- Living area with lcd 32" television.
- Fully equipped open kitchen with dining area seating six people.



Superior 2 Bedroom Residence

### Superior 2 Bedroom Residence

- Total area of 135 sq. meters, indoor space of 102 sq. meters and balcony space of 33 sq. meters.
- Balcony area with outdoor furniture
- Beach front facing.
- Master bedroom king size bedding, build-in wardrobe and 22" wall mounted lcd television. Spacious en-suite bathroom with bathtub, separate shower and double basin, complete with amenities and hair dryer.
- Second bedroom offers choice of king-size or twin beds, with build-in wardrobe and also spacious en-suite bathroom with shower stall and double wash basin, complete with amenities.
- Living area with lcd 32" television.
- Fully equipped open kitchen with dining area seating six people.



Premium 2 Bedroom Residence

### Premium 2 Bedroom Residence

- Total area of 113 sq. meters, consisting of 103 sq. meters of indoor space and a 10 sq. meters balcony.
- Balcony area with outdoor furniture.
- Pool-facing.
- Master bedroom king size bed, build-in wardrobe and 22" Wall-mounted lcd television. En-suite bathroom with bathtub, separate shower and double basin, complete with hair dryer and amenities.
- Second bedroom offers king size or twin bed with build-in wardrobe. Separate shower room with double basin.
- Living area with 32" lcd television.
- Fully equipped open kitchen with dining area seating six people.